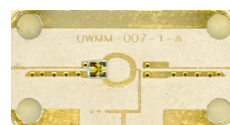


Description

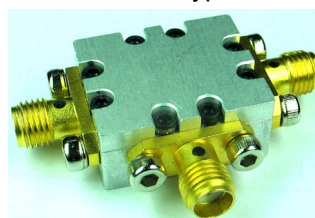
The UWMM-R3T10G is an ultra-wideband double-balanced mixer. This mixer utilizes our company's patented ultra-wideband balun, which enables low-cost implementation. This mixer operates for RF and LO frequencies from 3 to 20 GHz with low conversion loss.

Features

- ✓ Low cost
- ✓ LO/RF 3.0 to 20 GHz
- ✓ High IF: DC to 3 GHz
- ✓ 7 dB Typical Conversion Loss
- ✓ 27 dB LO - RF Isolation
- ✓ Package options:
 - 01 Housing: 0.86" × 0.7" × 0.4"
 - 02 Carrier type
 - Carrier size: 0.6" × 0.32" × 0.04"



Carrier type

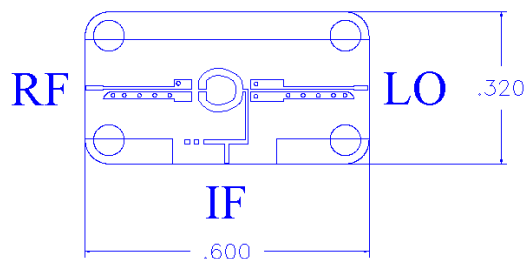


Housing type

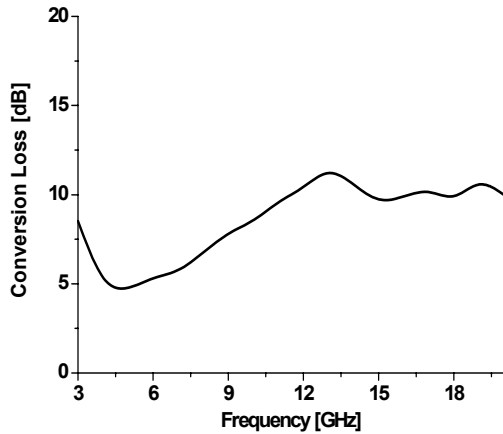
Electrical Specifications

Parameter	LO (GHz)	RF (GHz)	IF (GHz)	Min	Typical	Max
Conversion Loss (dB)	3 ~ 20	3 ~ 20	DC ~ 3		7	
Isolation	LO to RF				27	
	IF to RF				15	
Input P1dB (LO = 10 dBm)	3 ~ 20	3 ~ 20			3	

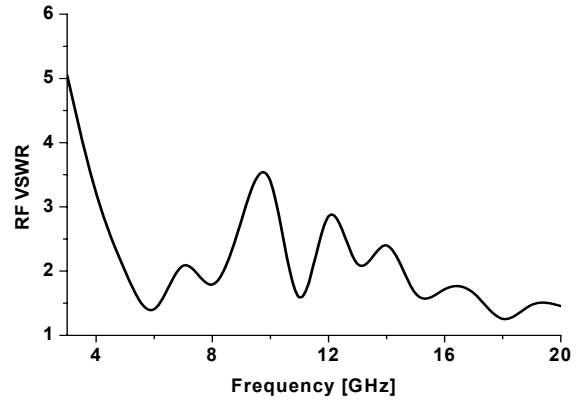
Dimension & Ports Description (for carrier type)



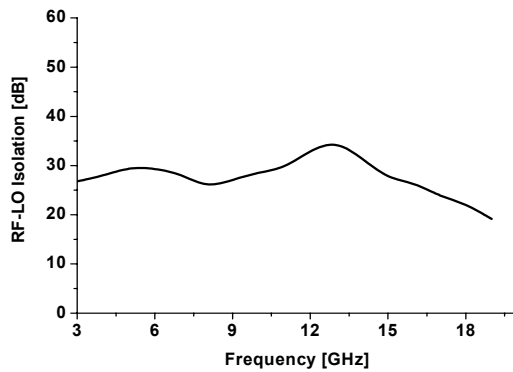
Conversion Loss



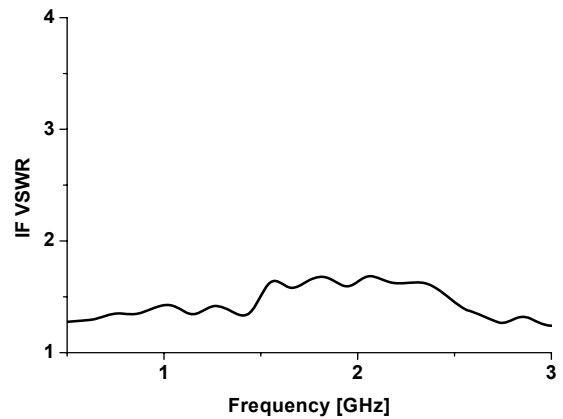
RF VSWR



LO-RF Isolation



IF VSWR



LO VSWR

