

UWMM-C3T12G

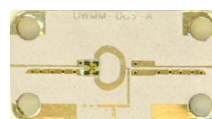
Ultra-wideband Double-balanced Mixer

Description

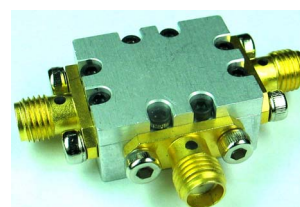
The UWMM-C3T12G is an ultra-wideband double-balanced mixer. This mixer utilizes our company's patented ultra-wideband balun, which enables low-cost implementation. This mixer operates for RF and LO frequencies from 3 to 12 GHz with low conversion loss.

Features

- ✓ Low cost
- ✓ LO/RF 3.0 to 10 GHz
- ✓ High IF: DC to 3 GHz
- ✓ 6 dB Typical Conversion Loss
- ✓ Package options:
 - 01 Housing: 0.86" × 0.7" × 0.4"
 - 02 Carrier type
 - Carrier size: 0.6" × 0.32" × 0.04"



Carrier type

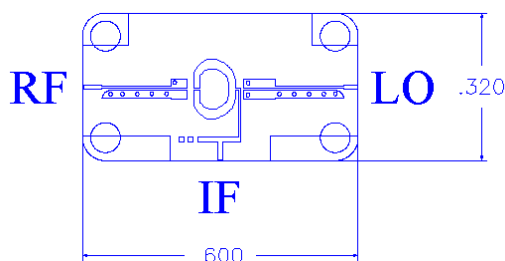


Housing type

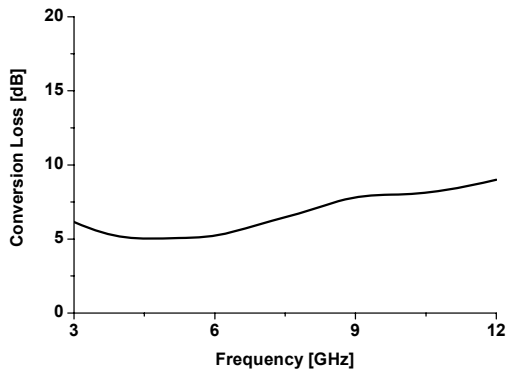
Electrical Specifications

Parameter	LO (GHz)	RF (GHz)	IF (GHz)	Min	Typical	Max
Conversion Loss (dB)	3 ~ 12	3 ~ 12	DC ~ 3		6	
Isolation	LO to RF				30	
	IF to RF			20		
Input P1dB (LO = +13dBm)	3 ~ 12	3 ~ 12			4.5	

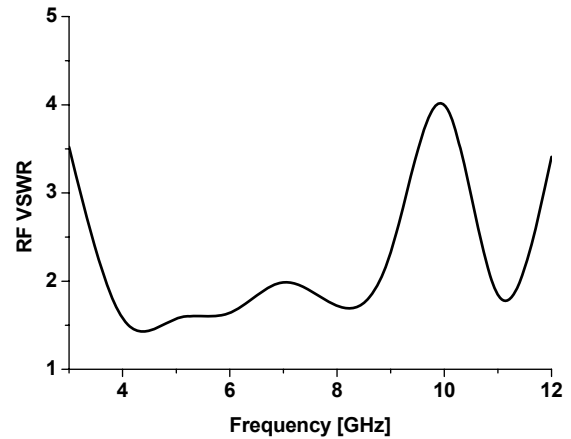
Dimension & Ports Description (for carrier type)



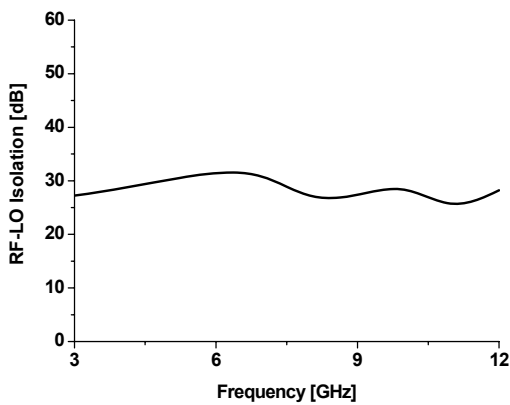
Conversion Loss



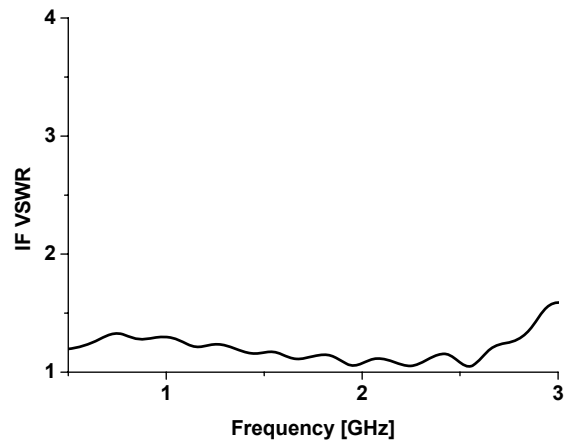
RF VSWR



LO-RF Isolation



IF VSWR



LO VSWR

