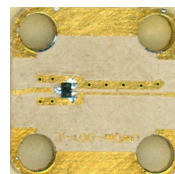


### Description

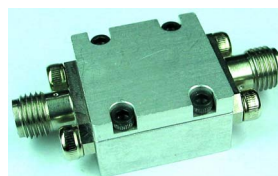
The UWDM-S8T36G is an ultra-wideband frequency doubler. This doubler utilizes our company's patented ultra-wideband balun, which enables low-cost implementation. This doubler produces output signals from 8 to 36 GHz with low conversion loss and high fundamental and 3rd harmonic suppression.

### Features

- ✓ Low cost
- ✓ Input 4 to 18 GHz
- ✓ Output 8 to 36 GHz
- ✓ 10 dB Typical Conversion Loss
- ✓ 30 dB Typical Fundamental Suppression
- ✓ 35 dB Typical 3rd Harmonic Suppression
- ✓ Package options:
  - 01 Housing: 0.71" × 0.7" × 0.4"
  - 02 Carrier: 0.6" × 0.32" × 0.04"
  - 03 Carrier: 0.32" × 0.32" × 0.02"



Carrier type

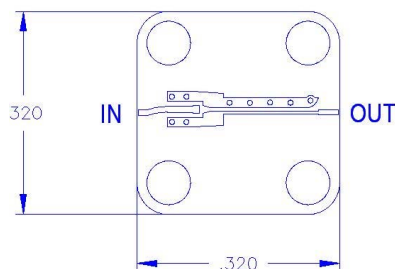


Housing type

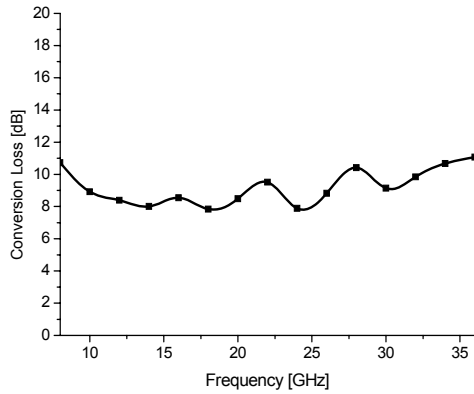
### Electrical Specifications

Parameter	Input (GHz)	Output (GHz)	Min	Typical	Max
Conversion Loss (dB)	4 ~ 18 (F)	8 ~ 36 (2F)	9	10	11
Fundamental Suppression (dBc)		4 ~ 18		30	
3rd Harmonic suppression (dBc)		12 ~ 54		35	
Input Level (dBm)				15	

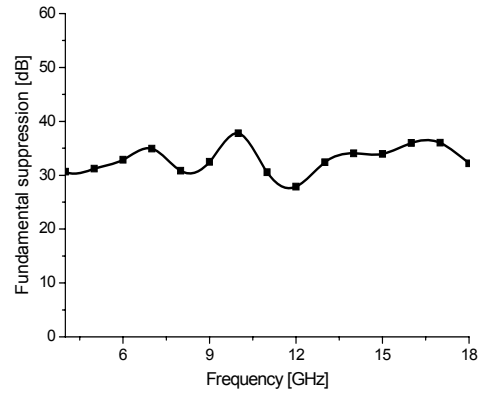
### Dimension & Ports Description (for carrier type)



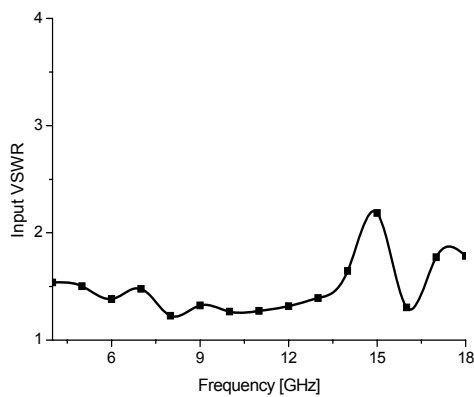
### Conversion Loss



### Fundamental Freq. Suppression



### Input VSWR



### Output VSWR

